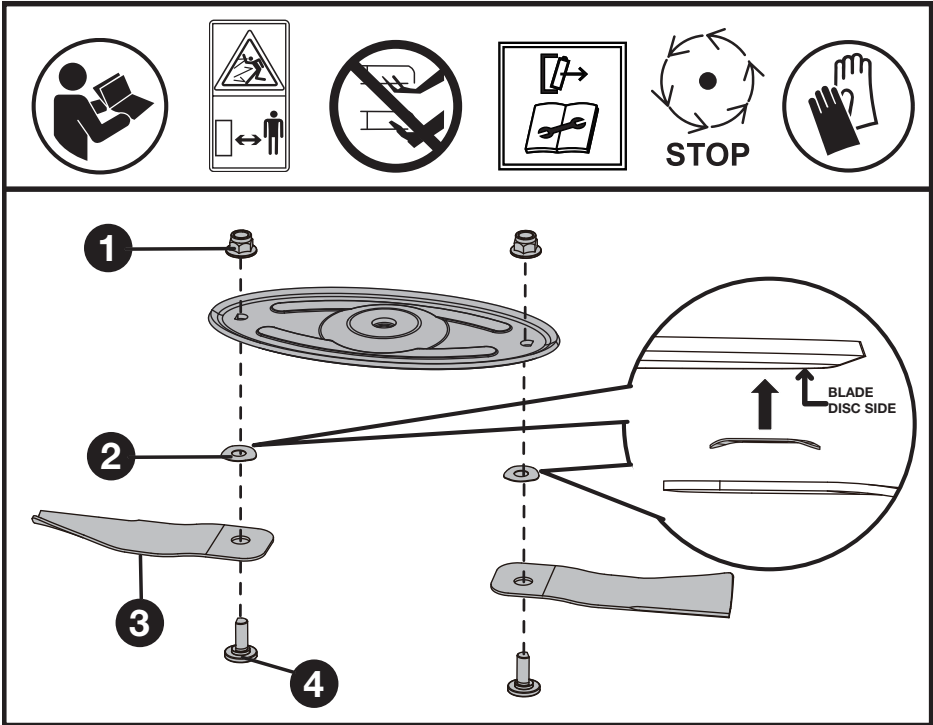


Please install the blades according to the assembly sequence shown in the figures below.

NOTE: Please pay attention to the tightening direction.



* The blade disc in the above figure is not standard equipped.

WARNING! ONLY USE NEW, GENUINE NUTS AND BOLTS, AS OTHERS MAY NOT MEET STRENGTH REQUIREMENTS AND COULD RESULT IN DAMAGE OR PERSONAL INJURY.

ALWAYS REPLACE BOTH BLADES AT THE SAME TIME. FAILURE TO DO SO MAY CAUSE DAMAGE OR PERSONAL INJURY DUE TO MACHINE IMBALANCE.

NOTE: Tightening torque for the blades: 35 Nm

- | | |
|----|-------------------------|
| 1. | SELF -LOCK NUTS (2 PCS) |
| 2. | WASHERS (2 PCS) |
| 3. | BLADES (2 PCS) |
| 4. | SETTING BOLTS (2 PCS) |



Copyright © 2024, Positec. All Rights Reserved.
AR02042500