

Kress

Commercial



SAFETY AND OPERATING MANUAL

Cordless Grass Trimmer

KC100 KC100.X

TABLE OF CONTENTS

Introduction.....	3
Component List.....	4
Product Safety.....	5
Assembly & Operation.....	7
Transportation.....	9
Maintenance.....	10
Cleaning.....	11
Storage.....	11
Troubleshooting.....	12
Technical Data.....	13

INTRODUCTION

Dear Customer,

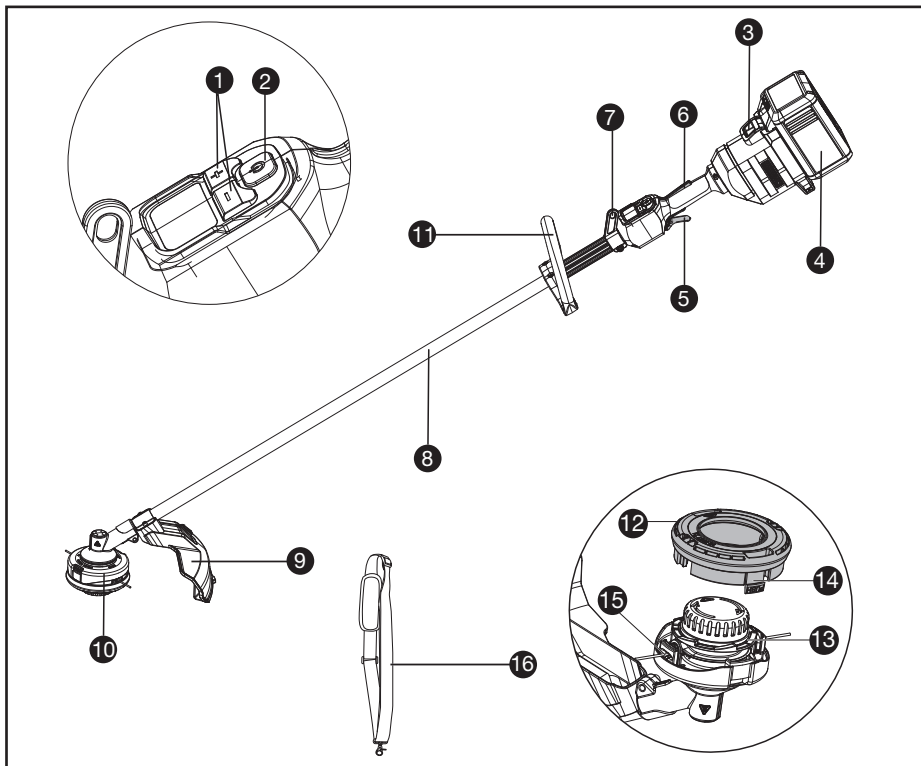
Thank you for buying this Kress Commercial product. We are dedicated to developing high quality products to meet your commercial landscaping requirements.

The Kress brand is synonymous with premium quality service. Over the years of your product's life, if you have any questions or concerns about your product, please contact your dealer or our Customer Service Team for assistance.

We are confident you will enjoy working with your Kress product for years to come.

INTENDED USE

This machine is intended for cutting grass and high weeds that cannot be reached with a lawn mower. This machine is also used on areas with slopes not conducive to mowing.



COMPONENT LIST

- | | |
|-----|--------------------------|
| 1. | SPEED CONTROL |
| 2. | ON / OFF SWITCH |
| 3. | BATTERY PACK RELEASE |
| 4. | BATTERY PACK * |
| 5. | THROTTLE TRIGGER |
| 6. | OPERATOR PRESENCE SWITCH |
| 7. | SHOULDER STRAP MOUNT |
| 8. | SHAFT |
| 9. | DEBRIS GUARD |
| 10. | TRIMMER HEAD |
| 11. | FRONT HANDLE |
| 12. | SPOOL CAP |
| 13. | SPOOL |
| 14. | CAP RELEASE LATCH |
| 15. | EYELET |
| 16. | SHOULDER STRAP * |

* Not all the accessories illustrated or described are included in standard delivery.

PRODUCT SAFETY



WARNING: Read all safety warnings and all instructions. Failure to follow all instructions

listed below may result in electric shock, fire and/or serious injury.

Carefully read the instructions for the safe operation of the machine.

Save all warnings and instructions for future reference.

This appliance is not intended for use by persons (including children) with reduced physical, sensory or mental capabilities, or lack of experience and knowledge, unless they have been given supervision or instruction concerning use of the appliance by a person responsible for their safety. Children should be supervised to ensure that they do not play with the appliance.

WARNING: For the purposes of recharging the battery, only use the detachable supply unit provided with this appliance.

Additional safety requirements for your grass trimmer

This grass trimmer is designed for cutting grass and similar soft vegetation and for trimming grass edges in private and hobby garden areas which are not accessible with a lawnmower.

The device is not allowed to be used in public gardens, parks, sports centers or at roadsides as well as in agriculture and forestry.

This grass trimmer is not allowed to be used for cutting or chopping:

- hedges, shrubs and bushes,
- flowers,
- in terms of composting.

Otherwise, there is a risk of injury.

**IMPORTANT
READ CAREFULLY BEFORE USE
KEEP FOR FUTURE REFERENCE**

Safe operating practices

1. Training

- a) Read the instructions carefully. Be familiar with the controls and the proper use of the machine.
- b) Never allow people unfamiliar with these instructions or children to use the machine. Local regulations can restrict the age of the operator.
- c) Keep in mind that the operator or user is responsible for accidents or hazards occurring to other people or their property.

2. Preparation

- a) Never operate the machine while people, especially children, or pets are nearby.
- b) Wear eye protection and stout shoes at all times while operating the machine.

3. Operation

- a) Use the machine only in daylight or good artificial light.
- b) Never operate the machine with damaged guards or shields or without guards or shields in place.
- c) Switch on the motor only when the hands and feet are away from the cutting means.

- d) Always remove the battery pack from the appliance,
 - whenever leaving the machine unattended;
 - before clearing a blockage;
 - before checking, cleaning or working on the machine;
 - after striking a foreign object;
 - whenever the machine starts vibrating abnormally.
- e) Take care against injury to feet and hands from the cutting means.
- f) Always ensure that the ventilation openings are kept clear of debris.

4. Maintenance and storage

- a) Remove the battery pack from the appliance before carrying out maintenance or cleaning work.
- b) Use only the manufacturer's recommended replacement parts and accessories.
- c) Inspect and maintain the machine regularly. Have the machine repaired only by an authorized repairer.
- d) When not in use, store the machine out of the reach of children.







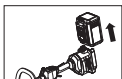


SAFETY WARNINGS FOR BATTERY PACK

- a) **Do not dismantle, open or shred cells or battery pack.**
- b) **Do not short-circuit a battery pack. Do not store battery packs haphazardly in a box or drawer where they may short-circuit each other or be short-circuited by conductive materials.** When battery pack is not in use, keep it away from other metal objects, like paper clips, coins, keys, nails, screws or other small metal objects, that can make a connection from one terminal to another. Shorting the battery terminals together may cause burns or a fire.
- c) **Do not expose battery pack to heat or fire. Avoid storage in direct sunlight.**
- d) **Do not subject battery pack to mechanical shock.**
- e) **In the event of battery leaking, do not allow the liquid to come into contact with the skin or eyes. If contact has been made, wash the affected area with copious amounts of water and seek medical advice.**
- f) **Keep battery pack clean and dry.**
- g) **Wipe the battery pack terminals with a clean dry cloth if they become dirty.**
- h) **Battery pack needs to be charged before use. Always refer to this instruction and use the correct charging procedure.**
- i) **Do not maintain battery pack on charge when not in use.**
- j) **After extended periods of storage, it may be necessary to charge and discharge the battery pack several times to obtain maximum performance.**
- k) **Recharge only with the charger specified by Kress. Do not use any charger other than that specifically provided for use with the equipment.**

- l) Do not use any battery pack which is not designed for use with the equipment.
- m) Keep battery pack out of the reach of children.
- n) Retain the original product literature for future reference.
- o) Remove the battery from the equipment when not in use.
- p) Dispose of properly.
- q) Do not mix cells of different manufacture, capacity, size or type within a device.
- r) Keep the battery away from microwaves and high pressure.
- s) **Warning! Do not use non-rechargeable batteries.**


USER MANUAL REQUIREMENTS FOR WIRELESS PRODUCT

- a) Operation of this device is subject to the following two conditions:
 - (1) This device may not cause harmful interference, and
 - (2) this device must accept any interference received, including interference that may cause undesired operation.
- b) Caution: Changes or modifications to this unit not expressly approved by the party responsible for compliance could void the user's authority to operate the equipment.
- c) NOTE: This equipment generates, uses and can radiate radio frequency energy and, if not installed and used in accordance with the instructions, may cause harmful interference to radio communications. However, there is no guarantee that interference will not occur in a particular installation. If this equipment does cause harmful interference to radio or television reception, which can be determined by turning the equipment off and on, the user is encouraged to try to correct the interference by one or more of the following measures:
 - Reorient or relocate the receiving antenna.
 - Increase the separation between the equipment and receiver.
 - Connect the equipment into an outlet on a circuit different from that to which the receiver is connected.
 - Consult the dealer or an experienced radio/TV technician for help.

	Wear eye protection
	Keep bystanders away
	Wear hand protection
	Li-Ion battery This product has been marked with a symbol relating to 'separate collection' for all battery packs and battery pack. It will then be recycled or dismantled in order to reduce the impact on the environment. Battery packs can be hazardous for the environment and for human health since they contain hazardous substances.
	Do not burn
	Batteries may enter water cycle if disposed improperly, which can be hazardous for ecosystem. Do not dispose of waste batteries as unsorted municipal waste.
	Make sure the battery is removed prior to changing accessories.
	Trimming
	RCM marking

ABN: Australian Business Number. By this number, business information such as entity type, status, business location etc. can be found at website <http://abr.business.gov.au>.
 ABN of Positac Australia Pty Limited is 14 101 682 357

SYMBOLS

	Read instruction sheet
---	------------------------

ASSEMBLY & OPERATION



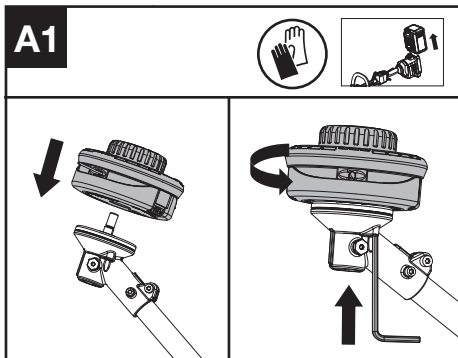
NOTE: Before using the tool, read the instruction book carefully.



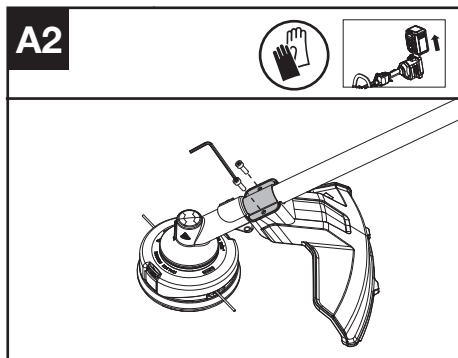
BEFORE OPERATION:

Assembling the cutting head (See Fig. A1)

Fit the cutting head. Insert the hex key into the hole and rotate the trimmer head counterclockwise until it stops in a locked position.



Assembling the debris guard (See Fig. A2)



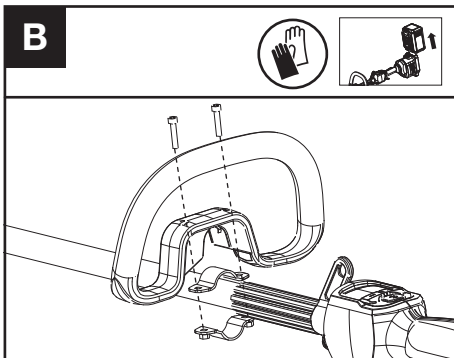
1. Install the correct Debris Guard for the trimmer head.
2. Secure the guard in place using the screw and torx key.

Assembling the Front Handle (See Fig. B)

1. Attach the Front Handle and lower clamp on the shaft.
2. Put the bolt through the holes.
3. Tighten the Front Handle.

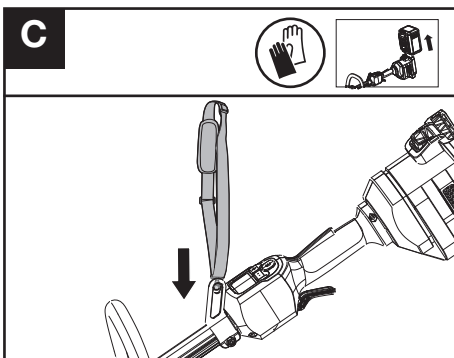


WARNING: Adjust the Front Handle as desired so as to make sure your front arm is straight when using the trimmer.

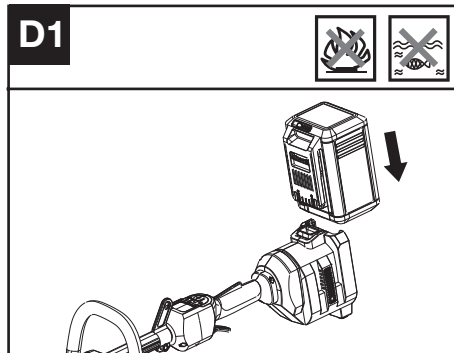


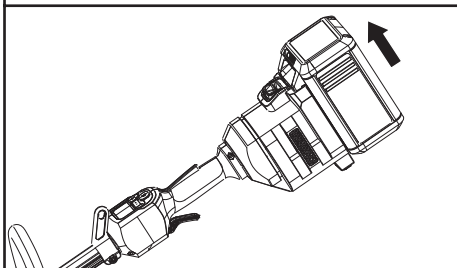
Fitting the shoulder strap (Sold Separately) (See Fig. C)

1. Adjust the length of shoulder strap to make sure that the carabiner is about a hand's width below the top of your hip.
2. Connect the carabiner of the accessory shoulder strap to the mounting point on the shaft of the trimmer.



Installing & removing the battery pack (See Fig. D1, D2)

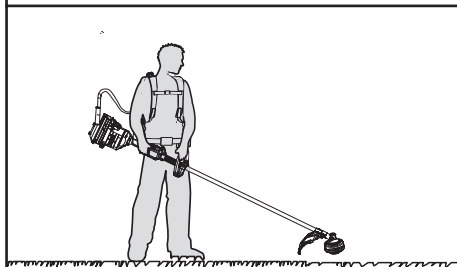


D2

1. Slide the battery pack into the battery compartment until you hear a click.
2. Press the battery pack release to release battery pack from your tool.

Connecting with the backpack harness (See Fig. D3)

The trimmer can be connected with an accessory backpack harness (not supplied). Refer to the backpack harness manual for more information.

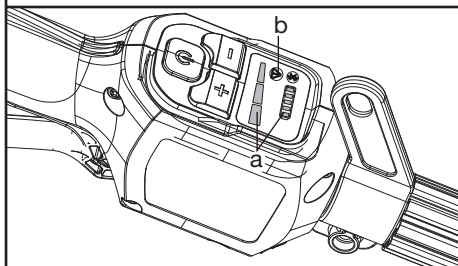
D3

TESTING THE TRIMMER AND BATTERY (See Fig. E)

Checking the controls

Operator Presence Switch and Throttle Trigger

1. Remove the battery.
2. Try to press the Throttle Trigger. If the Throttle Trigger can be pressed without depressing the Operator Presence Switch, the Operator Presence Switch is defective. Stop using the trimmer and contact the service agent.
4. Hold and press the Operator Presence Switch first, then press the Throttle Trigger.
5. Release the Throttle Trigger and the Operator Presence Switch. If the Throttle Trigger or the Operator Presence Switch is stuck and cannot spring back to its original position. Stop using the trimmer and contact the service agent.

E

Checking the display

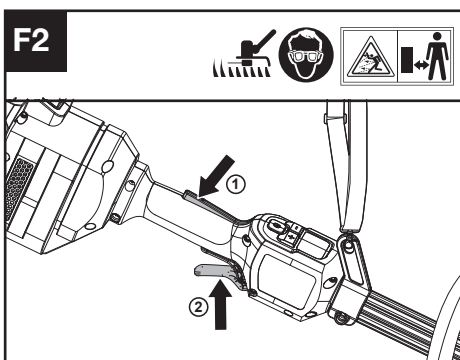
1. Insert the battery.
2. Hold and press the On / Off Switch. The product is switched on when the LED (a) is lit. The product is switched off when the LED (a) is out.
3. Press the Operator Presence Switch first, then press the Throttle Trigger to start the machine. The Trimmer Head rotates.
4. If the warning indicator (b) lights up or is flashing, refer to **Troubleshooting** for solutions.
5. Release the Throttle Trigger. The Trimmer Head stops rotating after a short delay. If the Trimmer Head continues to rotate, remove the battery and contact the service agent.

OPERATION:

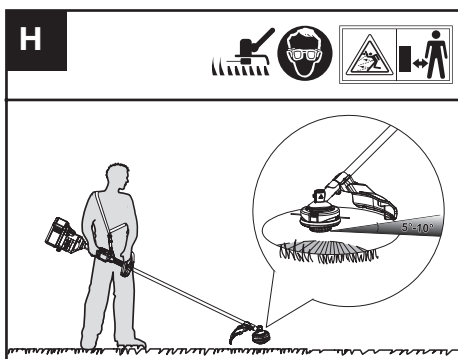
Starting the trimmer (See Fig. F1, F2)

1. Hold the trimmer firmly with your right hand on the control handle – wrap your thumb around the handle. Hold the trimmer with your left hand on the auxiliary handle– wrap your thumb around the handle.
2. Hold and press the On / Off Switch until the green LED is lit. The green LED shows the power level.
3. Press the Operator Presence Switch first, then press the Throttle Trigger to start the machine. The green LED for start/stop goes off after 5 seconds if not being used as a safety procedure. When not cutting, the unit will remain on if the operator presence switch is held down without operating the machine. If the green LED goes out, the product will need to be restarted.

NOTE: The Operator Presence Switch is designed to prevent accidental operation. When you press the Operator Presence Switch it releases the Throttle Trigger.



Cutting Tips (See Fig. H)



Selecting the speed

3 Power Levels can be selected depending on the application. Use the +/- to control the speed, which is as indicated by the LEDs. The higher the power level, the faster the tool runs.

Stopping the trimmer

Release the Throttle Trigger to stop the machine.

WARNING! The cutting head continues to rotate after the trimmer has been switched off; wait until it has completely stopped then lay down the tool.

Bump-line feed system (See Fig. G)

The trimmer is equipped with a bump-line system. Just bump the trimmer head while the machine is running, new line will feed out.

1. Swing the trimmer from side to side across the area to be cut.
2. Use the tip of the cutting line to do trimming; do not force the trimmer head into uncut grass.
3. Wire and picket fences may cause extra cutting line wear and breakage. Stone and brick walls, curbs, and wood may wear cutting line rapidly.
4. Avoid trees and shrubs. Tree bark, wood moldings, siding, and fence posts can easily be damaged by the cutting line.
5. The selected power level affects the battery's runtime. The lower the power level, the longer the runtime. It is recommended to use the lowest power level unless in worse cutting condition.

For Battery tools

The recommended ambient temperature range for discharging is -20°C ~ 45°C (-4°F ~ 113°F).

The recommended ambient temperature range for the charging system during charging is -5°C ~ 45°C (23°F ~ 113°F).

TRANSPORTATION

Transporting the trimmer

1. Switch off the trimmer and remove the battery.
2. When transporting your trimmer by hand, hold

the middle of the shaft with the cutting head to the rear and make sure that your machine is parallel to the ground.

- When transporting your trimmer in a vehicle, secure and position it to prevent movement or damage.

Transporting the battery

- Ensure the battery is in a safe condition.
- Use non-conductive packaging when transporting the battery.
- The contained Li-Ion batteries are subject to the dangerous goods legislation requirements. Transport batteries only when the battery housing is undamaged. Pack up the batteries in such a manner that cannot move around in the packaging.

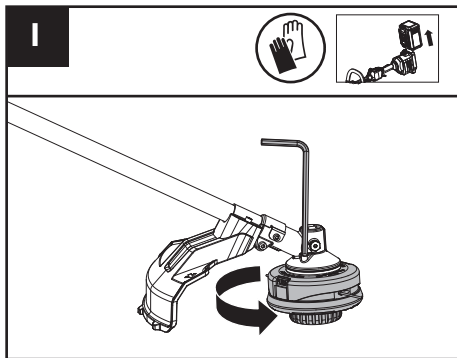
MAINTENANCE

WARNING! Always remove battery before conducting any maintenance on the trimmer.

Replacing the trimmer head (See Fig. I)

WARNING! Use of wire or metal-reinforced line is not authorized and could be extremely dangerous. Use only the cutting line recommended in this manual, in combination with the recommended debris guard.

WARNING! A damaged or loose cutting attachment head may vibrate, crack, break or come off the trimmer, which may result in serious or fatal injury or property damage. Make sure the trimmer head are properly and securely tightened and in good condition before starting work.

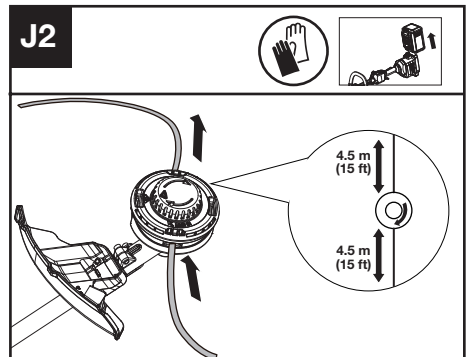
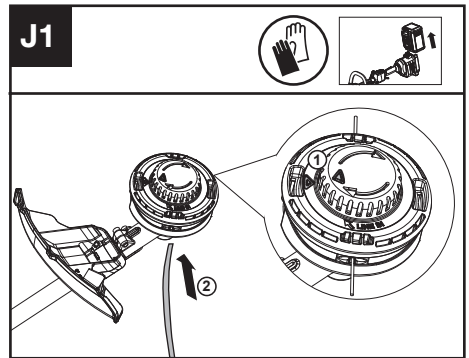


- Insert the hex key into the hole and rotate the trimmer head until it stops in a locked position.
- Then, rotate clockwise to remove it, and counterclockwise to assemble it.

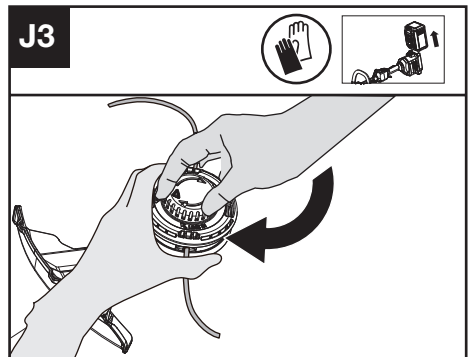
Winding the line (See Fig. J1, J2, J3)

- Rotate the spool cap to make two triangle icons

aligned. (See Fig. J1)



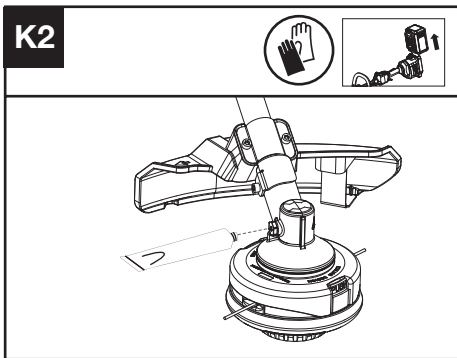
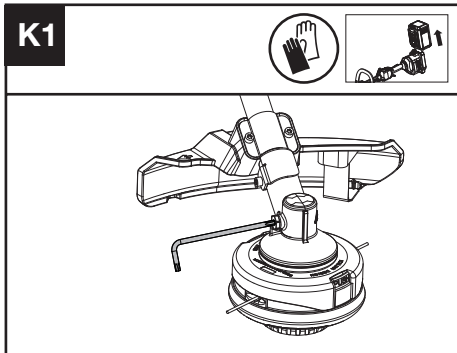
- Insert the replacement line through the eyelet (Line In) and feed it out through the other eyelet. Ensure both ends of the line are even on each end of the trimmer head (recommended 4.5 m (15 ft)) and cut the line. (See Fig. J2)
- Turn the dial clockwise to wind the line around the spool until about 16 cm (6") remains on either side. (See Fig. J3)



Lubricating the gearbox (See Fig. K1, K2)

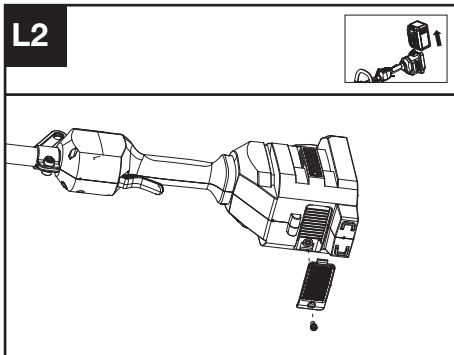
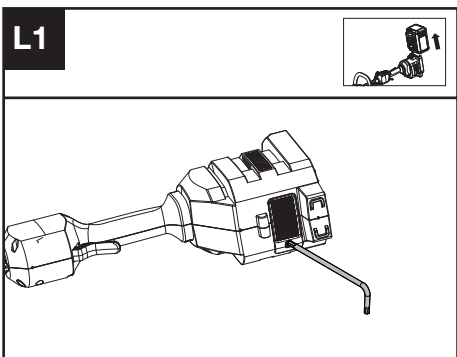
- Remove the screw on the gearbox.
- If there is no bevel gear grease on the end of the screw, squeeze 5 g of the gear grease (SHELL

- Gadus S2 V220 1) into the gear housing.
- Refit and tighten the screw firmly.
 - Install the battery and run the trimmer for 1 minute to ensure the gear is evenly lubricated.



Cleaning the air filter (See Fig. L1, L2)

- Clean the area around the air filter. Use a damp cloth or a soft brush.
- Unscrew and remove the air filter.
- Wash the air filter with running water to remove the dirt.
- Allow the air filter to dry in the air. And then install it in the housing by tightening the screw.



Maintenance intervals

It is recommended to lubricate the gearbox and clean the air filter every 50 hours of operation based on actual usage.

CLEANING

- Switch off the trimmer and remove the battery.
- Do not use aggressive detergents or solvents. Clean the machine after use with a damp cloth dipped in mild detergent.
- Keep battery connection free of dirt and debris, and clean with a soft and dry brush or cloth.
- Do not spray water onto the motor and electrical components.
- Do not use pressure washer to clean your machine.

STORAGE

- Remove the battery pack from the trimmer before storage.
- Once got wet in the rain during operation, the machine and the battery should be dried before storing or charging. Remove the battery and reinsert it if the machine fails to turn on.
- Store the trimmer and the battery in a dry and secure place that is inaccessible to children and other unauthorized people. Remove the cutting attachment if it will not be used for a long time.
- Store the battery only within a temperature range between 5 °C (41 °F) and 25 °C (77 °F). As an example, do not leave the battery in the car in summer time.

TROUBLESHOOTING

The following table gives problems and actions that you can perform if your machine does not operate correctly.



WARNING: Switch the machine off and remove the battery prior to any troubleshooting.

TRIMMER


Problems	Possible Causes	Corrective Action
Battery indicator LED flashing	Low battery voltage.	Charge the battery.
Red error LED flashing	Overload.	The cutting attachment is jammed Deactivate the product. Remove the battery. Clean the cutting attachment from unwanted materials.
	Temperature issue.	Let the product cool down.
	The Throttle Trigger and the start/stop button are pressed at the same time.	Release Throttle Trigger. Perform the starting sequence again.
	Other problems	Contact Service Agent
The product does not start	Deris in the battery connectors.	Clean the battery connectors with compressed air or a soft brush.
	Other problems	Contact Service Agent.
Trimmer runs intermittently	The battery is not fully inserted to the machine.	Insert the battery fully.
	Potential electrical issue.	Contact Service Agent.
Excessive vibrations/ noise.	Line balance issue.	Rewind the line.
	Cutting attachment issue. Machine defective.	Replace cutting attachment. Contact Service Agent.

BATTERY

Problems	Possible Causes	Corrective Action
Error LED lit	The battery is discharged	Charge the battery. If battery fails to charge, contact your Service Agent.
	Temperature issue.	Use the battery in surroundings where temperatures are between -5°C and 45°C (23°F to 113°F) for charge; -20°C to 45°C (-4°F to 113°F) for discharge.
	Others	Contact your Service Agent.

TECHNICAL DATA

Type Designation: **KC100 KC100.X** (1-designation of machinery, representative of Cordless Grass Trimmer)

	KC100 KC100.X **
Voltage	60 V  MAX ***
Cutting speed	4200 / 5100 / 5900 rpm
Cutting diameter	42 cm (16.5")
Line diameter	2.4 / 2.7 mm (0.095" / 0.105") nylon line
Degree of protection	IPX4
Machine weight (Bare tool)	4.5 kg (9.9 lbs)

** X=1-999, A-Z, M1-M9 they are only used for different customers, there are no safety relevant changes between these models.

*** Voltage measured without workload. Initial battery voltage reaches maximum of 60 volts. Nominal voltage is 54 volts.

SUGGESTED BATTERIES AND CHARGERS

Battery	Capacity	Charger	Amperage
KAC804	4.0 Ah	KAC840	30 A
KAC810 (With Backpack Harness)	11.0 Ah		

We recommend that you purchase your accessories from the same Dealer that sold you the tool. Refer to the accessory packaging for further details. Your Dealer can assist you and offer advice.

TECHNICAL DATA FOR BATTERY PACK (OPTIONAL)

Frequency bands for Bluetooth	2400-2483.5 MHz
Maximum Output Power for Bluetooth	8 dBm

COMBINATIONS OF CUTTING ATTACHMENTS, DEFLECTORS, AND CARRYING SYSTEMS

Cutting attachment	Debris guard	Barrier bar	Carrying system
- 4" Trimmer head (Optional, not included) - 5" Trimmer head	- High-visibility deflector - Universal deflector with skirt	- Optional	- Shoulder strap - Backpack battery Harness
- Knife blade	- Universal deflector without skirt	- Required	

Positec Australia Pty Limited
10 Corporate Blvd Bayswater , VIC 3153, Australia



Copyright © 2023, Positec. All Rights Reserved.
AR01719900